

# HARMAN QUICK PITCH GUIDE

## JBL Ceiling Loudspeakers



### CONTROL CONTRACTOR 20 SERIES

#### BLIND-MOUNT SMALL FORMAT CEILING SPEAKERS

- JBL's Core ceiling speakers series with High "Cut Through" sound levels
- 4" to 6.5" speaker size versions (70v and 8ohm capable)
- Subwoofer available
- Similar voicing to allow for different sizes to be used in combination
- Paintable
- Accessories include C-shaped support backing plate 2 tile support rails



### LCT 81 C/T

#### LOW-PROFILE CEILING TILE LOUDSPEAKERS

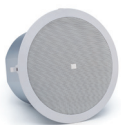
- High intelligibility for effective voice communication
- Designed to lay into a 2ftx2ft US-style suspended grid ceiling
- Low profile depth of only 100mm (4in)
- Combined 8Ω and 70V/100V operation easy to set via rotary switch
- High 96db sensitivity means a smaller amplifier



### CONTROL 10 SERIES

#### BLIND-MOUNT SMALL FORMAT CEILING SPEAKERS

- JBL's newest and cost effective line-up
- Paintable but available in white or black versions
- Features wide bandwidth (110° to 130°)
- 70V/100V and 8-ohm operation in each speaker/By-passable transformer
- Widest frequency range in its class
- Sweet and pleasant sound



### CONTROL 40 SERIES

#### CONSTANT-DIRECTIVITY CEILING SPEAKERS

- Patented RBI Radiation Boundary Integrator® providing a uniform coverage
- Conical 120° Coverage
- Constant directivity means the listeners hear the same without beaming
- High intelligibility even off axis so you can potentially use less speakers
- Subwoofer available
- Paintable



### CSS COMMERCIAL SERIES

#### CEILING SPEAKERS

- Affordable loudspeakers that provide excellent performance for paging and background music applications
- High sensitivity ceiling speakers provide maximum sound level at smaller tap settings
- Triple voltage transformers (100V, 70V, 25V) are compatible with any distributed speaker system
- Meets UL1480 and UL2043 requirements for use in plenum ceiling spaces



### 8100 SERIES

#### CEILING SPEAKERS WITH STYLIZED GRILLE

- High-fidelity performance at a cost-effective price point
- Two models: 8124, a 4-inch (100 mm) full-range & 8128, an 8-inch (200 mm) full-range
- Features high sensitivity drivers that deliver maximum sound levels using minimal amplifier power
- Contemporary grill design with elegance and top notch performance
- Use with or without backcan (only if backcan is not required)



### CONTROL 200/300 SERIES

#### MEDIUM/LARGE FORMAT CEILING SPEAKERS

- Premium in-ceiling loudspeakers designed for applications where superior musical impact, voice clarity and high sound levels are required
- Kevlar™ reinforced woofer cones for extended low-end response
- JBL's titanium-diaphragm compression drivers reproduce high frequencies with clarity and impact
- For 70V/100V applications, low-saturation transformers provide the sound quality of a low-impedance system in distributed applications



### CONTROL 60 SERIES PENDANT

#### CONSTANT-DIRECTIVITY PENDANT SPEAKERS

- Patented RBI Radiation Boundary Integrator® providing a uniform coverage
- Conical 120° Coverage
- Constant directivity means the listeners hear the same without beaming
- High intelligibility even off axis so you can potentially use less speakers
- Subwoofer available



# HARMAN QUICK PITCH GUIDE

## Other JBL Installed Loudspeakers



### CONTROL CONTRACTOR 20 SERIES SURFACE MOUNT SPEAKERS

- 13 Models providing an array of sizes
- Control 23-1, 25-1 and 28-1 Upgraded!
  - *Extended frequency range*
  - *Higher power handling*
  - *"U" bracket option*
- Comes with Patented JBL InvisiBall™
- Weather-resistant transducers & enclosures with high-impact



### CONTROL CONTRACTOR 100 SERIES IN-WALL SPEAKERS

- Ideal for boardrooms, reception areas, airports, convention centers, cruise ships, retail outlets, restaurants & museums, providing minimal visual impact
- High performance woofers & pure titanium dome high frequency drivers with EOS™ (Elliptical Oblate Spheroidal) waveguides for low distortion and smooth response
- 2x sizes and available with or without transformer
- Paintable



### CONTROL 80 SERIES LANDSCAPE SPEAKERS

- Designed for outdoor applications; highly weather resistant IP56
- Speakers provide excellent full-range sound and 360 degree coverage
- 5-1/4" and 8" Co-Ax versions
- Designed to be mounted on or in the ground with security screw
- Tough polyethylene enclosure resists abuse from the elements



### PSB-I PRO SOUNDBAR COMMERCIAL-GRADE SOUNDBAR

- Cost-effective, commercial-grade active soundbar designed specifically for use in applications such as hotel guestrooms and cruise ship staterooms
- IR Remote included
- Vibration Isolation mounting system
- Variable of fixed volume modes
- Offers a 4-position volume limiting switching to control maximum volume output



### CBT SERIES PASSIVE CONTROLLED-COVERAGE COLUMN SPEAKERS

- CBT Series line array columns with Constant Beamwidth Technology
- CBT Line Array Calculator free to download
- Legendary vertical pattern control for longer throw applications
- Extended bass versions available
- Available in Black or White
- Can be installed outdoors



### JBL ALL WEATHER SERIES AWC COMPACT & AW ALL-WEATHER

- AW (All Weather) is a lightweight 2-way high power full range version
  - *Rotatable horns*
  - *Multiple coverage patterns*
- AWC (All Weather Compact) is a Co-ax high power full range version
  - *Broad coverage patterns*
- Yokes are included (mounting brackets)
- 15" Subwoofer available



### AMX ACENDO VIBE 2100 CONFERENCING SOUNDBAR

- Audio designed by JBL
- Integrated far-field microphones and DSP with Active Echo Cancellation to ensure optimal audio in small meeting spaces and offices
- Elegant Design incorporating modern grey or black fabric, and high-quality tactile materials
- USB and Bluetooth Connectivity for BYOD applications
- Integrated mounting bracket for ease



### AMX ACENDO VIBE 5100 VIDEO CONFERENCING SOUNDBAR

- Audio designed by JBL
- Far-Field microphones to hear everyone in the room
- Integrated DSP with AEC (Acoustic Echo Cancellation) for optimal audio during conferences
- 4 Audio sources - Remote included
- Available in Grey or black
- 110° Field-of-View means everyone is seen with tilt and rotate
- Camera can be turned away for privacy

