



* All images in this datasheet are for illustrative purposes only.

LG MAGNIT All-in-One LAAA Series

All-in-One Micro LED Display



All-in-One LED Screen



Achieving True Black



Detailed Color



Intelligent Processor



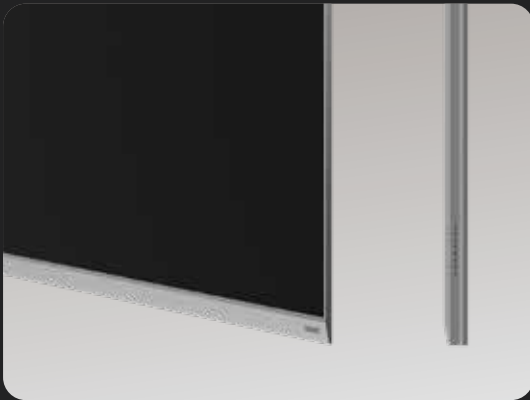
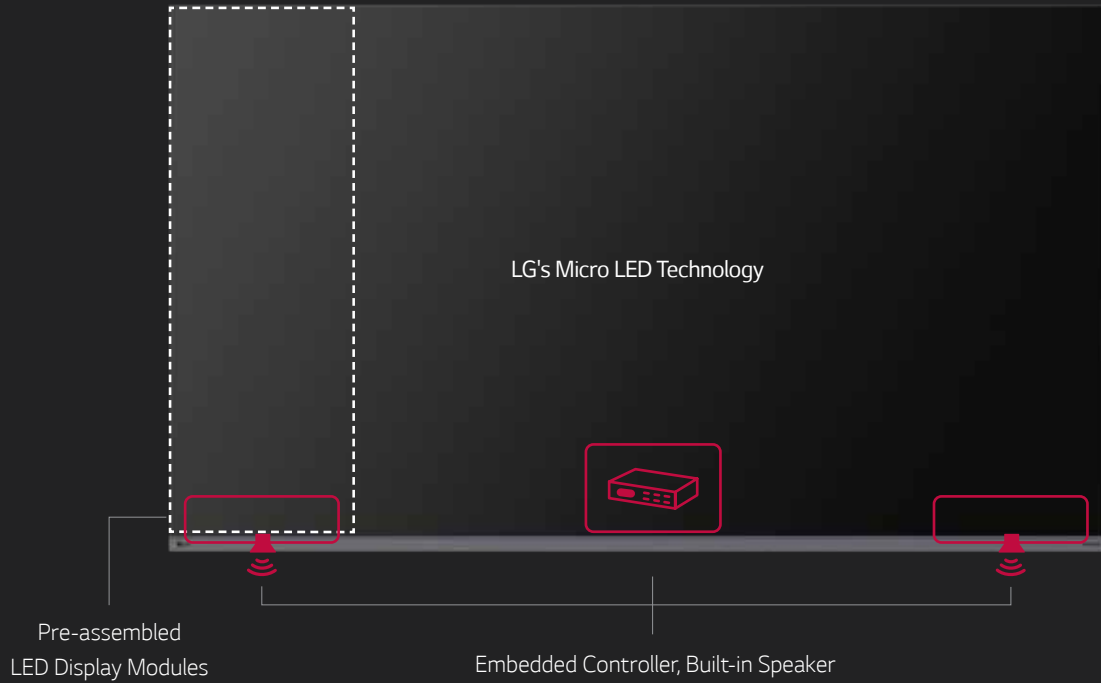
Easy Installation



Compatible with
LG One:Quick|Share

Clear Vision, Great Decision.

All-in-One Micro LED display for easy choice, easy installation



A sleek and slim design



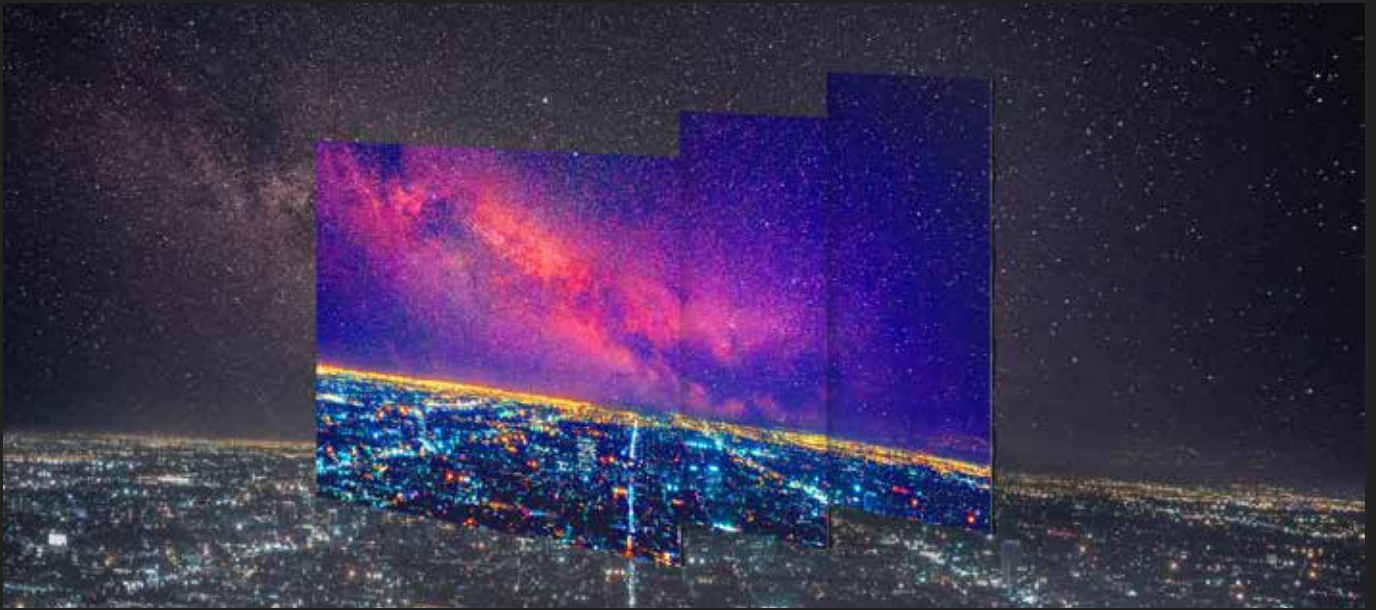
Front-accessible design for easy interface connectivity



Neatly organized vent hole design on the back

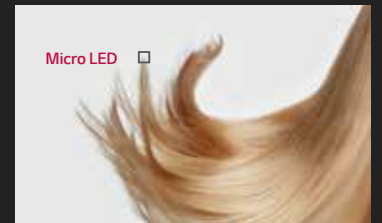


Easy access to buttons



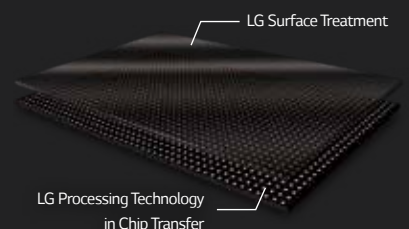
Improving Visual Precision with Micro Pixel Technology

LG MAGNIT's Micro Pixel Pitch Technology offers remarkable visual precision. Our advanced LED chips provide impressive detail and precise light control, delivering crystal-clear images on the display. With true color expression, every hue is rendered with stunning clarity and depth, providing a true-to-life visual experience. Enjoy the fineness of display technology with LG MAGNIT.



Enhanced Uniformity with LST (LG Surface Treatment) Technology

LG MAGNIT's innovative Chip Transfer and Surface Treatment Technology enhances white uniformity and reduces color distortion across a wide viewing angle, delivering true and precise viewing experiences. This technology ensures remarkable color uniformity, resulting in superb image quality.



* Based on LG's conventional LED signage without LG's chip transfer and surface treatment technology.



Achieving True Black with Black Coating Technology

LG MAGNIT's advanced and precise method for direct bonding micro-sized chips onto circuit boards, combined with the black coating technology and reduced spacing between the chips and the board, creates a stunning black expression that stands out compared to SMD-type LED displays. This makes it the ideal choice for displaying content that requires true black color, ensuring that every image is rich, vibrant, and true to life.



Intelligent Image Processor

The Alpha 7 Intelligent Processor adopts deep learning AI capability from LG's TV technology to analyze and recognize incoming content and optimize image clarity and sharpness.



All-in-One LED Screen with Built-in Speaker

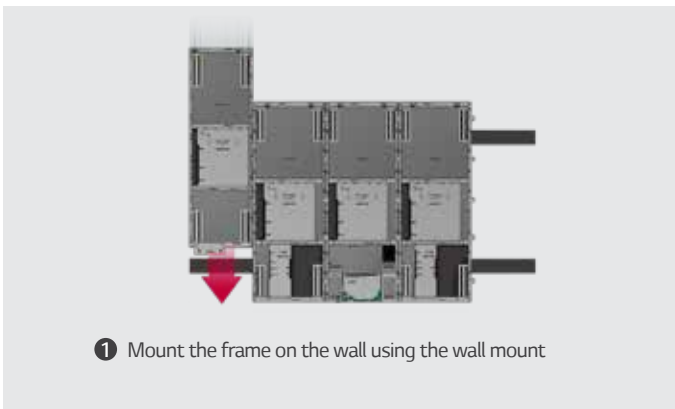
LG's LED All-in-One LAAA series with its 136-inch screen size is offered as an all-in-one package including an embedded controller and built-in speaker. It doesn't require controller connections or module configurations eliminating the complexity of most LED display installations. After installation, simply turn on the screen with a remote control like a home TV.



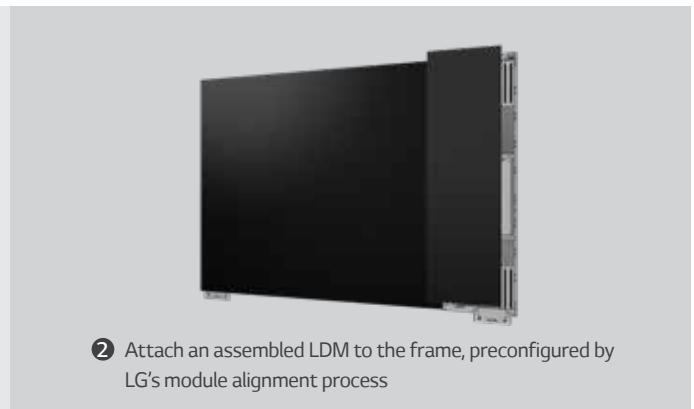
High Performance with webOS

Built-in Quad Core SoC (System on Chip) can execute several tasks at once for providing smooth content playback. Also, LG webOS Smart Platform enhances user convenience with an intuitive user interface that provides system integrators and developers simple app development tools* such as SDK (Software Development Kit), SCAP, sample applications.

* The webOS Signage Developer site (<http://webossignage.developer.lge.com>) provides SDK tools and documentation for creating apps on LG Digital Signage. This is only open to partners.



1 Mount the frame on the wall using the wall mount



2 Attach an assembled LDM to the frame, preconfigured by LG's module alignment process



3 Assemble bezels



4 Connect AC Power

Simple Installation Process

With its simple, five-module assembly, the LAAA MAGNIT All-in-One display can be easily assembled in a very short amount of time without the need for advanced training.



Office Meeting Mode

By selecting Office Meeting Mode it allows you to configure meeting room details like the room number and current time. Other convenient features include automatic input switching, a presentation timer, and adjustable settings such as auto-brightness and picture mode.

Compatible with AV Control Systems

The LAAA series has been certified Crestron Connected® for a higher level of compatibility with professional AV controls to achieve seamless integration and automated network based control.



Magic Remote for Ease of Use

With the LG Magic Remote, you can select and run the menu of the signage just like using a mouse and can be used as a laser pointer. In addition, the new "FREEZE" button on the remote control, allows users to temporarily freeze the screen while switching contents on the PC when connected to an external signal. This enables users to have uninterrupted meetings.



LG's Wireless Screen Sharing Solution LG One:Quick | Share

LG One:Quick Share* is a wireless screen sharing solution available through the LAAA series, USB transmission unit, and its app. You can simply share your PC screen to the display with its USB accessory button and embedded Wi-Fi, and can adjust the basic setting values (volume, picture mode, auto bright, etc.) of the connected display without a remote control. Also, the Office Meeting Mode helps you to display the agenda, note before the meeting starts.

* LG OneQuick Share needs to be purchased separately and is compatible with PC with Windows 10 and MacOS 10.15 operating systems.

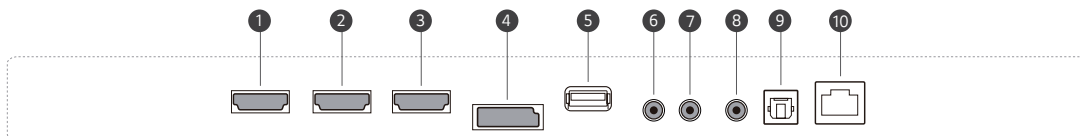
PRODUCT INFORMATION



LAAA Series

Pixel Pitch	1.56 mm
Brightness (After Calibration)	500 nits / (Peak) 1,000 nits
Weight per Screen (lbs. / kg)	418.9 / 190
Service Access	Front
IP Rating Front / Rear	IP50 / IP20

CONNECTIVITY



- 1 HDMI 1
- 2 HDMI 2
- 3 HDMI 3
- 4 DP
- 5 USB
- 6 RS-232C IN
- 7 RS-232C OUT
- 8 IR
- 9 OPTICAL DIGITAL AUDIO OUT
- 10 LAN

SPECIFICATIONS

LAAA015-G2

	Pitch Name	P1.56
Physical Parameters	Pixel Configuration	Micro LED
	Pixel Pitch (mm)	1.56
	Screen Resolution (W x H)	1,920 x 1,080
	Module Dimensions (W x H, in. / mm)	11.8 x 4.4 / 300 x 112.5
	No. of Modules per Cabinet (W x H)	10 x 15 (Total 150)
	Screen Dimensions (W x H x D, in. / mm, including Bezel)	118.3 x 69 x 2.2 (Thickest 2.3) / 3,005 x 1,742 x 54.9 (Thickest 57.4)
	Screen Surface Area (ft ² / m ²)	54.5 / 5.063
	Weight per Screen (lbs. / kg)	418.9 / 190
	Physical Pixel Density (pixels/m ²)	409,600
	Flatness of Cabinet (mm)	±0.2
	Cabinet Material	Steel
	Service Access	Front
Optical Specifications	Max. Brightness (After Calibration, nits)	500 / (Peak) 1,000
	Color Temperature (K)	3,200-9,300
	Visual Viewing Angle (Horizontal)	160
	Visual Viewing Angle (Vertical)	160
	Brightness Uniformity	95%
	Color Uniformity	±0.015 Cx, Cy
	Contrast Ratio	25,000 : 1 @ 10lux
	Processing Depth (bit)	20 (HDR10, HDR10 Pro)
Electrical Specifications	Power Consumption (W/Screen, Max.)	1,050
	Power Consumption (W/Screen, Avg.)	500
	Power Consumption (W/m ² , Max.)	208
	Heat Dissipation (BTU/h/Screen, Max.)	3,583
	Heat Dissipation (BTU/h/Screen, Avg.)	1,706
	Heat Dissipation (BTU/h/m ² , Max.)	710
	Power Supply (Vac)	100 to 240
	Frame Rate (Hz)	50 / 60
	Refresh Rate (Hz)	3,840
Operation Specifications	LED Lifetime (Half Brightness)	Up to 100,000 hours
	Operating Temperature (*F / °C)	32 to 104 / 0 to 40
	Operating Humidity	10-80% RH
	IP Rating Front / Rear	IP50 / IP20
	Warranty	3 Year Limited
	Speaker	Built-in (10 W + 10 W)
	Wi-Fi / Bluetooth	Yes
	Certification	Safety 60950-1, EMC Class A, BS 476 Part 7 Class 1
	Environment	RoHS
	Controller	Embedded
	I/O Port	HDMI (3), DP (1), USB, LAN, RS-232C In/Out, IR, Optical Digital Audio Out
	Remote Control	IR Remote (In-box), Magic Remote (In-box)
	Side by Side Installation	Yes (1 x N)
	3rd Party Compatibility	Crestron Connected*

* Specifications are subject to change without notice. Please make sure to check the product manual for details about product usage.