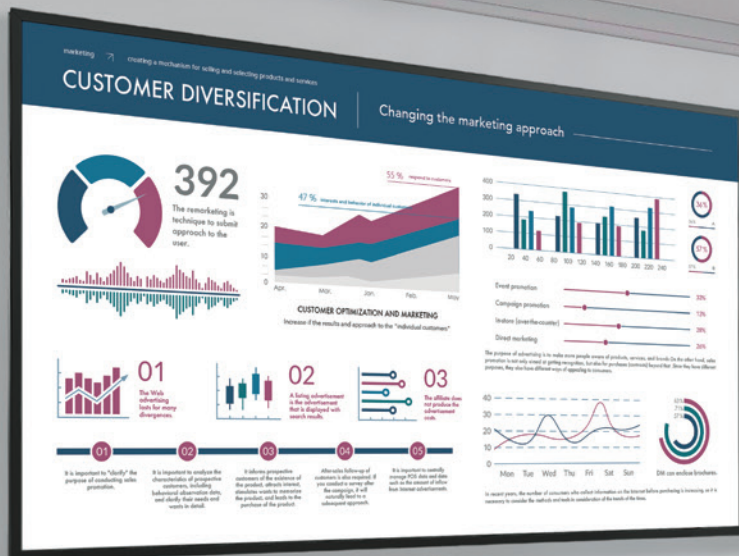


SONY

androidtv

# BRAVIA Professional Displays

2022 Model Catalog



BRAVIA



X|R  
Cognitive Processor

X|1  
4K HDR Processor

CRESTRON



Extron

logitech

# Outstanding picture quality and detailed reproduction for business

Harness the power of rich media content for your organization with BRAVIA Professional Displays.



**BRAVIA™**

**androidtv**



## Cognitive Processor XR™

### World's first processor with Cognitive Intelligence

Our BRAVIA XR Display takes vision and sound to the next level with the ingenious Cognitive Processor XR. It understands how humans see and hear, providing a whole new experience that immerses you completely in the scene.

## 4K HDR Processor X1™

### One chip, incredibly real

With Object-based HDR remaster and Super Bit Mapping 4K HDR technology, our new 4K HDR Processor X1 reproduces more depth, textures and natural colors than Sony's entry level 4K Processor X1. You'll see pure colors at higher brightness levels for exceptionally realistic pictures.



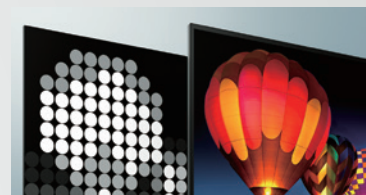
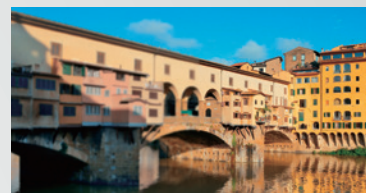
**X1**  
4K HDR Processor

## Cognitive Processor XR™

### XR Color

A wide palette of naturally beautiful colors

See colors that are natural and beautiful to the human eye. The Cognitive Processor XR enables our unique display to access a wider palette and reproduce each color with the subtle differences seen in the real world. With extended hue and saturation, vivid shades and realistic texture can be seen.



### XR Picture

### XR Motion

Intelligent motion processing for fast-moving, blur-free scenes

Watching fast-moving videos just got a whole lot better. Our Cognitive Processor XR with XR Motion Clarity™ cross analyses data to ensure motion stays smooth, bright, and clear with no blur.

### XR Contrast

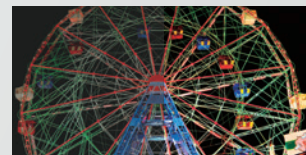
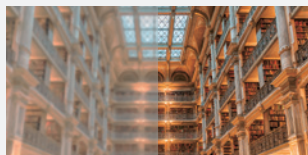
Real life depth with deep blacks and intense brightness

Feel breathtaking contrast, just as in real life. Our Cognitive Processor XR cross analyzes data, enhancing pictures in the same way that the human eye focuses for real life color and depth. With XR Contrast Booster, bright areas are brighter and dark areas darker -eliminating details overwhelmed by shadow or lost in blown-out highlights.

## 4K HDR Processor X1™

### Picture

Unique 4K X-Reality PRO picture processing technology upscales every pixel for remarkable clarity. Advanced noise reduction techniques and a special pattern database ensure every scene is full of lifelike detail.



X-Motion Clarity



Conventional TV

### Color

By widening the color spectrum, TRILUMINOS powered by our X1 processors reproduces more colors than a conventional display. It analyzes and processes data in every image to make colors even more natural and precise so pictures are closer than ever to real life.

### Clarity

On some screens, sports and fast-action scenes can seem to go by in a blur. Our latest X-Motion Clarity™ technology keeps everything smooth, bright, and clear. Each "blink" is individually controlled and its duration optimized, while brightness is boosted when needed, so you won't miss a thing.

# Expanding the possibility of your business with the full lineup of BRAVIA Professional Displays

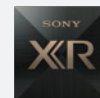
In sizes ranging from 32" to 100", our lineup provides flexible options to match virtually any business application, in any environment.



## Sony's largest professional display model with supreme picture quality features

### 100"

The 100" BZ40J delivers supreme picture quality, high contrast, and more detail for large-sized digital signage and meeting rooms.



**XBR**  
Cognitive Processor

## Features for professional use



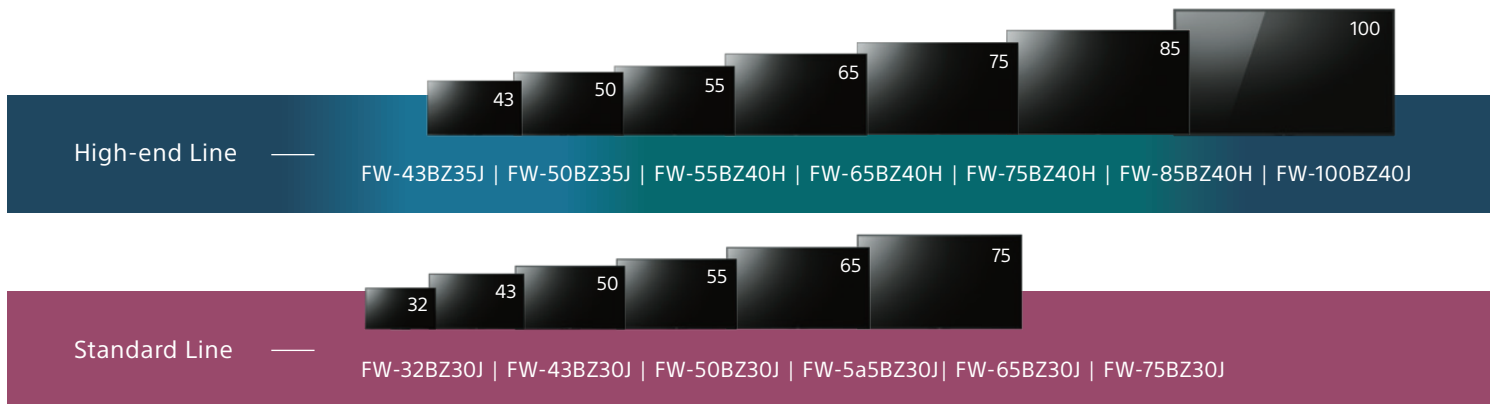
### Professional mode

Professional features let you disable input or remote control, remove labels and block buttons; customize and store display settings and features, add security then copy them easily from display to display via USB flash memory.



### Flexible content layout with HTML5

The BZ Series offers built-in support for the HTML5 application platform, so it's possible to use HTML5 interactive signage content without requiring a set-top box or PC. The content screen can be freely laid out using the 4K video, pictures, or even with the HDMI input.



Small,  
high picture quality 32"  
4K display model

**32"**

Small in size, but big in picture  
quality for meeting content details  
even in huddle space environments  
with 32" BZ30J



**X1**  
4K HDR Processor

## Professional design

### Logo position for public installation

The Sony logo is on the top-right side of the bezel, creating clean-framed landscape and portrait digital signage installations.



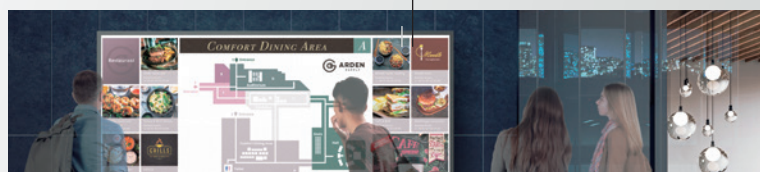
Ideal for digital signage applications

### Four-sided uniform bezel for portrait installation

\* for BZ40J only

### Carrying handle

\* for BZ40J only



### Cable management

Neatly bundles the power cable, HDMI and other cables with a cable clasper.



### 32" AC adapter holder

Smart installation by  
adapter holder even  
in limited space

\* for BZ30J only



### IP network and serial communication controls

The BZ Series is controllable both via IP network (wired/wireless LAN) and RS-232C. This makes it possible to incorporate the displays into a variety of existing systems, such as in offices and as eye-catching signage.

### Wi-Fi 5GHz / Apple AirPlay & Chromecast built-in™

Discover a new world of possibilities with enhanced BRAVIA functionality. Easily mirror content onto your BRAVIA Pro Display using Apple AirPlay or Chromecast built-in, and take advantage of Wi-Fi 5GHz WAP connectivity.



# BZ40J

Features

100"

androidtv



Our largest size screen model with Cognitive Processor XR & Supreme Picture Quality

Peak brightness : 940cd/m<sup>2</sup>

## Cognitive Processor XR™

The BZ40J incorporates the Cognitive Processor XR that uses human perspective analysis to cross analyze thousands of elements at one to create an intensely immersive picture.

## XR Triluminos Pro

Powered by our Cognitive Processor XR, this display reproduces color in a way that humans find beautiful. See a wider palette of colors with an enhanced range of hue and saturation, allowing natural shades and precise details to be seen, even in dark scenes.



## XR Motion Clarity™

On some screens, fast-moving scenes can seem to go by in a blur. Our latest LED XR X-Motion Clarity technology keeps everything smooth, bright and clear. Each frame is individually controlled and its duration optimized, while brightness is boosted when needed, so you won't miss a thing.



24/7 • Portrait • Tilt

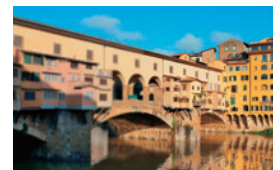


BRAVIA XR



## XR 4K Upscaling

Powered by our Cognitive Processor XR, this display takes 2K signals close to true 4K quality for incredibly real and immersive viewing. XR 4K Upscaling accesses and utilizes a vast amount of data, analyzing patterns in scenes and recreating subtle details.



## XR Contrast Booster

By precisely balancing light output across the screen, dimming some areas and boosting others, the XR Contrast Booster adjusts brightness for higher peaks in glare and deeper blacks in shadows. As bright areas are brighter and dark areas darker, scenes look more real with extra depth and detail.



High brightness, high contrast images for business application content

Peak brightness : 850 cd/m<sup>2</sup>

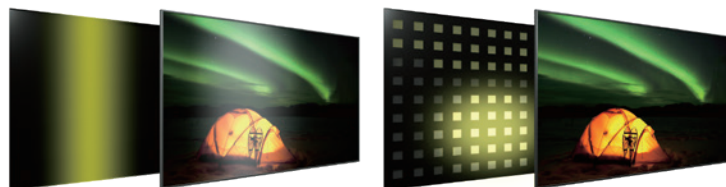
## Picture quality features



## Full Array LED

Brighter highlights and deeper blacks

Multiple LED zoning allows Full Array display models to adjust and create contrast depending on the scene, resulting in more light where brightness is needed, and less light where darkness is needed.



## Cosmetic design



Logo position



All side terminal position



Flat bottom bezel

## 24/7•Portrait•Tilt





## Picture quality features



## Motionflow XR

Less blur, even in fast scenes

On some screens, sports and fast action scenes go by in a blur. Our Motionflow technology keeps movement smooth and clear by creating extra images between images and black images between scenes. The result? Less blur and afterimage, more flowing motion.



## Cosmetic design



Logo position



All side terminal position



Flat bottom bezel

## 24/7•Portrait•Tilt



# BZ30H

Features

75"

65"

55"

50"

43"

32"

androidtv



Entry lineup including space saving size for more implementation options in business use



## Picture quality features



## Color reproduction

Our displays with a wide color gamut and unique TRILUMINOS PRO™ algorithm can detect color from saturation, hue and brightness to reproduce natural shades in every detail. You'll enjoy colors that are closer to those seen in the real world.



## Cosmetic design

## 24/7•Portrait•Tilt



Logo position



All side terminal position



Flat bottom bezel



# BRAVIA

Professional Tuner Models

Features —

85"

75"

65"

55"

## Content from any source, with stunning clarity.



### BRAVIA Pro Tuner Models

Our new, feature-rich Pro BRAVIA® tuner models stunning color and clarity, making them ideal for specific applications in businesses, schools and universities, healthcare, entertainment venues, public spaces, and retail stores.

The **FWD-55X75/FWD-65X75** and **FWD-75X80K/FWD-85X80K** Pro BRAVIA tuner models bring

intelligent TV processing technology that reproduces over a billion accurate colors, resulting in picture quality that is natural and precise. They bring the most advanced built-in tuner and video processing features you need to ensure that content from virtually any source is easily accessed. And even better – both models include a 3-year professional limited warranty, to keep you up and running.

#### Key Features | FWD-55X75K / FWD-65X75K

- 55" or 65" (diag.) screen size, 4K HDR\*
- ATSC TV Tuner
- X1 Picture Processor enhances color, contrast and clarity for a superior picture
- 4K X-Reality PRO technology lets viewers experience stunning picture quality

#### Key Features | FWD-75X80K / FWD-85X80K

- 75" or 85" (diag.) screen size, 4K HDR\*
- ATSC 3.0 Nextgen TV Tuner
- Triluminos PRO provides color processing for better color saturation, hue, and more color volume and clarity for a superior picture
- Sony X-Balanced Speakers for improved audio clarity along with a slimmer speaker design.

\*3840x2160 pixels. Upscaled, simulated and enhanced 4K image will vary based on source content.

# BZ-series Specifications

## High-end line

		FW-100BZ40J	FW-85BZ40H	FW-75BZ40H	FW-65BZ40H	FW-55BZ40H	FW-50BZ35J	FW-43BZ35J
General features	Screen Size	100"	85"	75"	65"	55"	50"	43"
	Brightness (cd/m²)	Typ. 600 / Peak 940	Typ. 620 / Peak 850				570	560
	Native contrast ratio	9,000:1	4,000:1	6,000:1			5,000:1	4,000:1
	Dynamic contrast ratio	600,000:1	600000:1		550000:1		500,000:1	400,000:1
	Response Time (ms)	7	6	8			6	
	Display resolution (H x V, pixels)	3,840 x 2,160						
	HDR (High Dynamic Range) compatibility	Yes (HDR10,HLG,Dolby Vision)						
	Aspect Ratio	16:9						
Portrait/Tilt Compatibility*2		Yes						
Display features	Dimming type	Local Dimming					Frame Dimming	
	Display device	LCD						
	Backlight type	Direct (Full Array LED)						
	4K Processor	Cognitive Processor XR	4K HDR Processor X1					
	Operation time	24/7						
Video Specs	Wide Mode	Wide Zoom/Normal/Full/Zoom	Auto/Wide Zoom/Normal/Full/Zoom				Wide Zoom / Normal / Full / Zoom	
	4:3 Default	Yes						
	Video Processing	XR 4K Upscaling	4K X-Reality PRO					
	Motion enhancer	XR Motion Clarity, Auto mode	X-Motion Clarity, Auto mode				Motionflow XR 960Hz (Native 120Hz), Auto mode	
	TRILUMINOS Display	XR Triluminos Pro	TRILUMINOS DISPLAY				TRILUMINOS PRO	
	Viewing Angle (Right/Left)	178 (89/89) degree						
	Viewing Angle (Up/Down)	178 (89/89) degree						
	HDMI Signal	4096x2160p(24, 60Hz), 3840x2160p(24, 30, 60, 120Hz), 1080p(30, 60, 120Hz), 1080/24p, 1080i(60Hz), 720p(30, 60Hz), 720/24p, 480p	4096x2160p (24, 60Hz), 3840x2160p (24, 30, 60, 120Hz), 1080p (30, 60, 120Hz), 1080/24p, 1080i (60Hz), 720p (30, 60Hz), 720/24p, 480p				4096x2160p (24, 60Hz), 3840x2160p (24, 30, 60, 120Hz), 1080p (30, 60, 120Hz), 1080/24p, 1080i (60Hz), 720p (30, 60Hz), 720/24p, 480p	
Audio Specs	Speaker Position	Down Firing	Side Back + Down Firing				Down Firing	
	Audio Power Output	10W + 10W						
Professional features	Professional Hidden mode	Pro Mode						
	HDMI auto wake-up	Yes						
	HTML5 platform	Yes						
	Multicast/IPTV	Yes						
	Operating System*2	Android 10						
	On-board Storage (GB)	16GB*3						
Network Specs	Wi-Fi Direct	Yes						
	Wi-Fi Certified	Yes						
	Wireless LAN	Integrated						
Convenience features	USB playback codecs	MPEG1:MPEG1 / MPEG2PS:MPEG2 / MPEG2TS(HDV, AVCHD):MPEG2, AVC / MP4(XAVC S):AVC, MPEG4, HEVC / AVI:Xvid, MotionJpeg / ASF(WMV):VC1 / MOV:AVC, MPEG4, MotionJpeg / MKV:Xvid, AVC, MPEG4, VP8.HEVC / WEBM:VP8 / 3GPP:MPEG4, AVC / MP3 / ASF(WMA) / LPCM / WAV / MP4AAC / FLAC / JPEG						
	On Screen Clock	Yes						
	Sleep Timer	Yes						
	On/Off Timer	Yes						
	Chromecast built-in	Yes						
	Apple AirPlay (Internet required)	Yes						
Control Specs	IP Control	Yes						
	RS-232C Control	1 (Side)						
	HDMI-CEC	Yes						
Inputs and outputs	HDCP	HDCP2.3 (for HDMI1/2/3/4)						
	Composite Video Input (s)	1 (Side, Mini jack)						
	HDMI inputs total	4 (4Side)						
	Analog Audio Input (s) (Total)	1 (Side Analog Conversion)						
	Digital Audio Output (s)	1 (Side)						
	USB ports	2 (Side)						
Design features	Ethernet inputs	1 (Side)						
	Frame color	Black						
	Stand Design	Slim Blade Stand	Metal Blade Stand				Slim Blade Stand	
	VESA® Hole Spacing Compatible	Yes						
Environment specs	VESA® Hole Pitch (W x H)	600 x 400 mm	400 x 400 mm	300 x 300 mm			200 x 200 mm	
	Screen Size for WEB (diagonal, cm, integer or 1st decimal)	253 cm	215.0 cm	189.0 cm	164.0 cm	139.0 cm	126 cm	108 cm
	Rated Power Consumption	426 W	318W	277W	214W	173W	148 W	114 W
	Power Consumption (in Standby)	0.5 W						
Measurements	Dynamic Backlight Control	Yes						
	Power Saving Mode / Back Light Off Mode	Yes						
	Dimension of TV without Stand (W x H x D)	2,260 x 1,297 x 98 mm	1,899 x 1,089 x 72 mm	1,674 x 961 x 71 mm	1,450 x 833 x 70 mm	1,231 x 710 x 70 mm	1,119 x 649 x 70 mm	964 x 563 x 69 mm
	Dimension of TV with Stand (W x H x D)	2,260 x 1,346 x 475 mm	1,899 x 1,162 x 441 mm	1,674 x 1,034 x410 mm	1,450 x 903 x 338 mm	1,231 x 780 x 338 mm	1,119 x 715 x 286 mm	964 x 628 x 286 mm
Weight	Dimension of Package Carton (W x H x D)	2,440 x 1,558 x 378 mm	2,036 x 1,232 x 258 mm	1,810 x 1,107 x 186 mm	1,574 x 958 x 184 mm	1,348 x 833 x 160 mm	1,225 x 782 x 141 mm	1,070 x 695 x 141 mm
	Weight of TV without Stand	88.9 kg	45.8 kg	32.9 kg	22.2 kg	16.5 kg	12.7 kg	10.2 kg
	Weight of TV with Stand	92.6 kg	47.7 kg	34.4 kg	23.2 kg	17.5 kg	13.3 kg	10.7 kg
	Weight of Package Carton (Gross)	129 kg	62kg	46kg	31kg	23kg	19 kg	14 kg

# BZ-series Specifications

## Standard line

		FW-75BZ30J	FW-65BZ30J	FW-55BZ30J	FW-50BZ30J	FW-43BZ30J	FW-32BZ30J
General features	Screen Size	75"	65"	55"	50"	43"	32"
	Brightness (cd/m <sup>2</sup> )	440					300
	Native contrast ratio	1,200:1			5,000:1	1,200:1	3,000:1
	Dynamic contrast ratio	300,000:1					260,000:1
	Response Time (ms)	11	10	9	10		
	Display resolution (H x V, pixels)	3,840 x 2,160					
	HDR (High Dynamic Range) compatibility	Yes (HDR10, HLG, Dolby Vision)					
	Aspect Ratio	16:9					
Display features	Portrait/Tilt Compatibility*1	Yes					
	Dimming type	Frame Dimming					
	Display device	LCD					
	Backlight type	Direct LED					Edge LED
	4K Processor	4K HDR Processor X1					
Video Specs	Operation time	24/7					
	Wide Mode	Wide Zoom / Normal / Full / Zoom					
	4:3 Default	Yes					
	Video Processing	4K X-Reality PRO					
	Motion enhancer	Motionflow XR 240Hz (Native 60Hz), Auto mode					
	TRILUMINOS Display	TRILUMINOS PRO					
	Viewing Angle (Right/Left)	178 (89/89) degree					
	Viewing Angle (Up/Down)	178 (89/89) degree					
Audio Specs	HDMI Signal	4096x2160p (24, 60Hz), 3840x2160p (24, 30, 60Hz), 1080p (30, 60Hz), 1080/24p, 1080i (60Hz), 720p (30, 60Hz), 720/24p, 480p					
	Speaker Position	Down Firing					
Professional features	Audio Power Output	10W + 10W					5W + 5W
	Professional Hidden mode	Pro Mode					
	HDMI auto wake-up	Yes					
	HTML5 platform	Yes					
	Multicast/IPTV	Yes					
	Operating System*2	Android 10					
Network Specs	On-board Storage (GB)	16GB *3					
	Wi-Fi Direct	Yes					
	Wi-Fi Certified	Yes					
Convenience features	Wireless LAN	Integrated					
	USB playback codecs	MPEG1:MPEG1 / MPEG2PS:MPEG2 / MPEG2TS(HDV, AVCHD):MPEG2, AVC / MP4(XAVC S):AVC, MPEG4, HEVC / AVI:Xvid, MotionJpeg / ASF(WMV):VC1 / MOV:AVC, MPEG4, MotionJpeg / MKV:Xvid, AVC, MPEG4, VP8.HEVC / WEBM:VP8 / 3GPP:MPEG4, AVC / MP3 / ASF(WMA) / LPCM / WAV / MP4AAC / FLAC / JPEG					
	On Screen Clock	Yes					
	Sleep Timer	Yes					
	On/Off Timer	Yes					
	Chromecast built-in	Yes					
Control Specs	Apple AirPlay (Internet required)	Yes					
	IP Control	Yes					
	RS-232C Control	1 (Side)					
Inputs and outputs	HDMI-CEC	Yes					
	HDCP	HDCP2.3 (for HDMI1/2/3/4)					
	Composite Video Input (s)	1 (Side, Mini jack)					
	HDMI inputs total	4 (4Side)					
	Analog Audio Input (s) (Total)	1 (Side Analog Conversion)					
	Digital Audio Output (s)	1 (Side)					
	USB ports	2 (Side)					
Design features	Ethernet inputs	1 (Side)					
	Frame color	Black					
	Stand Design	Slim Blade Stand	Slim Blade Stand	Slim Blade Stand	Slim Blade Stand	Slim Blade Stand	Stand
	VESA® Hole Spacing Compatible	Yes	Yes	Yes	Yes	Yes	Yes
Environment specs	VESA® Hole Pitch (W x H)	300 x 300 mm			200 x 200 mm		100 x 200 mm
	Screen Size for WEB (diagonal, cm, integer or 1st decimal)	189 cm	164 cm	139 cm	126 cm	108 cm	80 cm
	Rated Power Consumption	297 W	230 W	196 W	146 W	107 W	66 W
	Power Consumption (in Standby)	0.5 W	0.5 W	0.5 W	0.5 W	0.5 W	0.5 W
Measurements	Dynamic Backlight Control	Yes					
	Power Saving Mode / Back Light Off Mode	Yes					
	Dimension of TV without Stand (W x H x D)	1,686 x 969 x 72 mm	1,462 x 842 x 71 mm	1,243 x 719 x 71 mm	1,126 x 653 x 70 mm	972 x 567 x 70 mm	726 x 430 x 76 mm
Weight	Dimension of TV with Stand (W x H x D)	1,686 x 1,045 x 410 mm	1,462 x 912 x 338 mm	1,243 x 787 x 338 mm	1,126 x 718 x 286 mm	972 x 632 x 286 mm	726 x 454 x 172 mm
	Dimension of Package Carton (W x H x D)	1,824 x 1,114 x 187 mm	1,588 x 965 x 184 mm	1,362 x 840 x 160 mm	1,240 x 796 x 141 mm	1,070 x 695 x 141 mm	814 x 551 x 152 mm
	Weight of TV without Stand	31.6 kg	21.6 kg	15.7 kg	12.3 kg	10 kg	7.5 kg
	Weight of TV with Stand	32.9 kg	22.5 kg	16.6 kg	12.9 kg	10.5 kg	7.7 kg
	Weight of Package Carton (Gross)	49 kg	31 kg	23 kg	17 kg	14 kg	10 kg

\*1 Please refer "Wall-Mount Installation Manual" for condition details \*2 As of June, 2021 \*3 The actual capacity available to the user will vary depending on OS and installed software requirements.  
Google, Google Play, Android TV, Chromecast built-in and other marks are trademarks of Google LLC.

# Pro Tuner Model Specifications

		FWD-85X80K	FWD-75X80K	FWD-65X75K	FWD-55X75K
TV System	Tuner	ATSC/ATSC3.0(NEXTGEN TV)	ATSC/ATSC3.0(NEXTGEN TV)	ATSC	ATSC
	Tuner (Cable))	Clear QAM	Clear QAM	Clear QAM	Clear QAM
	Number of tuners	1(Digital/Analog)	1(Digital/Analog)	1(Digital/Analog)	1(Digital/Analog)
Display Features	Dimming type	Frame Dimming	Frame Dimming	Frame Dimming	Frame Dimming
	Display device	LCD	LCD	LCD	LCD
	Backlight type	Direct(Full Array LED)	Direct(Full Array LED)	Direct LED	Direct LED
	Brightness (cd/m2) (*1)	560	560	560	610
	Contrast Ratio (*1)	4000:01:00	4000:01:00	1200:01:00	1200:01:00
	Dynamic Contrast Ratio	500000:1	500000:1	500000:1	550000:1
	Response Time (ms) (*1)	6	6	8	8
Video Specs	Wide Mode	Auto/Wide Zoom/Normal/Full/Zoom	Auto/Wide Zoom/Normal/Full/Zoom	Auto/Wide zoom/Normal/Full/Full Pixel/Zoom/14:9	Auto/Wide zoom/Normal/Full/Full Pixel/Zoom/14:9
	4:3 Default	Yes	Yes	Yes	Yes
	Video Processing	4K X-Reality PRO	4K X-Reality PRO	4K X-Reality PRO	4K X-Reality PRO
	Motionflow	Motionflow XR 960 (Native 120Hz), Auto mode	Motionflow XR 960 (Native 120Hz), Auto mode	Motionflow XR 240 (Native 60Hz)	Motionflow XR 240 (Native 60Hz)
	Compatible with HD	Yes(HDR10, HLG)	Yes(HDR10, HLG)	Yes(HDR10, HLG, Dolby Vision)	Yes(HDR10, HLG, Dolby Vision)
	Video Signal	4096x2160p(24,60Hz), 3840x2160p(24,30,60Hz), 1080p(30,60Hz), 1080/24p, 1080i(60Hz), 720p(30,60Hz), 720/24p, 480p	4096x2160p(24,60Hz), 3840x2160p(24,30,60Hz), 1080p(30,60Hz), 1080/24p, 1080i(60Hz), 720p(30,60Hz), 720/24p, 480p	4096x2160p(24,60Hz), 3840x2160p(24,30,60Hz), 1080p(30,60Hz), 1080/24p, 1080i(60Hz), 720p(30,60Hz), 720/24p, 480p	4096x2160p(24,60Hz), 3840x2160p(24,30,60Hz), 1080p(30,60Hz), 1080/24p, 1080i(60Hz), 720p(30,60Hz), 720/24p, 480p
Audio Specs	Speaker position	Down Firing	Down Firing	Down Firing	Down Firing
	Audio Power Output	10W + 10W	10W + 10W	10W + 10W	10W + 10W
Network Specs	Wi-Fi direct	-	-	-	Yes
	Wi-Fi Certified	Yes	Yes	Yes	Yes
	DLNA	-	-	Home Network Client, Home Network Renderer	Home Network Client, Home Network Renderer
	Miracast (screen mirroring)	-	-	Yes (only for B2B purpose)	Yes (only for B2B purpose)
	Firmware update	Yes	Yes	Yes	Yes
	Internet Browser	-	-	Vewd (Not pre-installed)	Vewd (Not pre-installed)
	Wireless LAN	Integrated	Integrated	Integrated	Integrated
Convenience Features	USB Play (contents)	MPEG1:MPEG1/MPEG2PS:MPEG2/MPEG2TS(HDV,AVCHD):MPEG2,AVC/MP4(XAVCS): AVC,MPEG4,HEVC/AVI:Xvid,MotionJpeg/ASF(WMV):VC1/ MOV:AVC,MPEG4,MotionJpeg/MKV:Xvid,AVC,MPEG4,VP8,HEVC/WEBM:VP8/3GPP:MPEG4,AVC/MP3/ASF(WMA)/LPCM/WAV/MP4AAC/FLAC/JPEG	MPEG1:MPEG1/MPEG2PS:MPEG2/MPEG2TS(HDV,AVCHD):MPEG2,AVC/MP4(XAVC S):AVC,MPEG4,HEVC/AVI:Xvid,MotionJpeg/ASF(WMV):VC1/ MOV:AVC,MPEG4,MotionJpeg/MKV:Xvid,AVC,MPEG4,VP8,HEVC/WEBM:VP8/3GPP:MPEG4,AVC/MP3/ASF(WMA)/LPCM/WAV/MP4AAC/FLAC/JPEG	MPEG1:MPEG1/MPEG2 PS:MPEG2/MPEG2 TS (HDV,AVCHD):MPEG2,AVC/MP4(XAVC S): AVC,MPEG4,HEVC,AVI/AVI:MotionJpeg/ASF (WMV):VC1/MOV:AVC,MPEG4/MKV:AVC,MPEG4,VP8,HEVC/3GPP:MPEG4,AVC/ MP3/ASF(WMA) /LPCM/WAV/MP4AAC/FLAC/JPEG	MPEG1:MPEG1/MPEG2 PS:MPEG2/MPEG2 TS (HDV,AVCHD):MPEG2,AVC/MP4(XAVC S): AVC,MPEG4,HEVC,AVI/AVI:MotionJpeg/ASF (WMV):VC1/MOV:AVC,MPEG4/MKV:AVC,MPEG4,VP8,HEVC/3GPP:MPEG4,AVC/MP3/ASF(WMA) /LPCM/WAV/MP4AAC/FLAC/JPEG
	On screen dock	Yes	Yes	Yes	Yes
	Sleep timer	Yes	Yes	Yes	Yes
	On/Off timer	Yes	Yes	Yes	Yes
	Chrome Cast	Yes	Yes	Yes	Yes
Inputs & Outputs	HDCP	HDCP2.3(for HDMI1/2/3/4)	HDCP2.3(for HDMI1/2/3/4)	HDCP2.3(for HDMI1/2/3)	HDCP2.3(for HDMI1/2/3)
	RF Connection Inputs	1(Side)	1(Side)	1(Side)	1(Side)
	Composite Video Input(s)	1(Side)	1(Side)	1(Side)	1(Side)
	HDMI™ Connection(s) (Total)	4(4Side)	4(4Side)	3(3Side)	3(3Side)
	Digital Audio Output(s)	1(Side)	1(Side)	1(Rear)	1(Rear)
	USB	2(Side)	2(Side)	2(Rear)	2(Rear)
Design Features	Ethernet Connection(s)	1(Side)	1(Side)	1(Rear)	1(Rear)
	Finish (Surface Color)	Black	Black	Black	Black
	Table Top Stand	Separate(assembly required)	Separate(assembly required)	Separate(assembly required)	Separate(assembly required)
	VESA® Hole Spacing Compatible	Yes	Yes	Yes	Yes
	VESA® Hole Pitch	400 x 400 mm / 15 3/4 x 15 3/4 inch	300 x 300 mm / 11 7/8 x 11 7/8 inch	400x200mm/15 3/4x7 7/8inches	400x200mm/15 3/4x7 7/8 inches
Eco & Energy Savings	Screen size (measured diagonally)	85"(84.6")	75"(84.6")	65"(64.5")	55"(54.6")
	Power Consumption (Rated/standard)	378 W	306 W	180 W	142 W
	Power Consumption (in Standby)	0.5W	0.5W	0.5W	0.5W
	Power Requirements	AC 120V for UL cUL AC 110-240V for other	AC 120V for UL cUL AC 110-240V for other	AC 120V for UL cUL AC 110-240V for other	AC 120V for UL cUL AC 110-240V for other
	Power Saving Mode / Back Light Off Mode	Yes	Yes	Yes	Yes
	Dynamic Backlight Control	Yes	Yes	Yes	Yes
	Light Sensor	Yes	Yes	Yes	Yes
	AC Power Input	C8 INLET(REAR)	C8 INLET(REAR)	Side	Side
Measurements	Display only (WxHxD) (Approx.)	1901 x 1090 x 73 mm / 74 7/8 x 43 x 2 7/8 inch	1675 x 962 x 73 mm / 66 x 37 7/8 x 2 7/8 inch	1463x852x87mm/57 5/8x33 5/8x3 1/2inches	1243x729x84mm/49x28 3/4x3 3/8 inches
	Display with stand (WxHxD) (Approx.)	1901 x 1177 x 456 mm / 74 7/8 x 46 3/8 x 18 inch	1675 x 1040 x 410 mm / 66 x 41 x 16 1/4 inch	1463x914x337mm/57 5/8x36x13 3/8inches	1243x790x291mm/49x31 1/8x11 1/2 inches
	Package carton (WxHxD) (Approx.)	2035 x 1238 x 237 mm / 80 1/4 x 48 3/4 x 9 3/8 inch	1824 x 1114 x 187 mm / 71 7/8 x 43 7/8 x 7 3/8 inch	1567 x 963 x 186 mm / 61 3/4 x 38 x 7 3/8 inch	1347 x 840 x 160 mm / 53 1/8 x 33 1/8 x 6 3/8 inch
Weight	Display only	44.7 kg / 98.5 lb	32.2 kg / 71 lb	21.4kg/47.2lb.	13.9kg/30.7lb
	Display with stand	46.2 kg / 101.8 lb	33.4 kg / 73.6 lb	22.1kg/48.7lb.	14.5kg/32lb.
	Package carton	62 kg / 136.6lb.	48 kg / 105.8lb.	30 kg / 66.1lb.	22 kg / 48.5lb.
Bezel	Bezel type	Plastic	Plastic	Plastic	Plastic
	Bezel Size (Top/Side/Bottom)	14.4x14.4x22.3 mm	12.3x12.3x20.6 mm	17x17x25.5 mm	16.6x16.6x26 mm
Display Specs	Viewing angle (Right/Left)	178(89/89) degree	178(89/89) degree	178(89/89) degree	178(89/89) degree
	Viewing angle (Up/Down)	178(89/89) degree	178(89/89) degree	178(89/89) degree	178(89/89) degree
	Display resolution	QFHD	QFHD	QFHD	QFHD
	Aspect ratio	16:09	16:09	16:09	16:09
	OS	Android 10	Android 10	Android 11	Android 11
Signage Specs	Easy HTML5 Signage embedded	Yes	Yes	Yes	Yes
	Multicast/IPTV	Yes	Yes	Yes	Yes
Control Specs	RS-232C Control	1(Side)	1(Side)	-	-
	Pro Mode	No	No	No	No
	IP Control	Yes	Yes	Yes	Yes
	HDMI auto wake-up	Yes	Yes	Yes	Yes

# BRAVIA Professional Alliance Partners

Discover how we work closely with top companies to add even more value to our industry-leading AV products and solutions. Whether it's configuring a digital signage network, connecting participants using video collaboration, or outfitting a room for device management and automation, we are committed to helping you.

Visit [pro.sony/Alliances](https://pro.sony/Alliances).



## YOUR DISPLAY INVESTMENT – PROTECTED

Strengthen your ROI with BRAVIA Professional BZ40 Displays



**5 YEAR  
EXTENDED  
WARRANTY**

Sony is offering a **5-year extended warranty** to all end-users who purchase a BRAVIA® Professional BZ40 Display from an authorized reseller or distributor during the **promotion period ending March 31, 2023**. That's an additional 2 years tacked onto our standard 3-year warranty!

**Contact your Sony representative to learn more.**

For full features visit  
[pro.sony/BRAVIA](https://pro.sony/BRAVIA)

© 2022 Sony Corporation. All rights reserved. Reproduction in whole or in part without permission is prohibited. Features and specifications are subject to change without notice. All non-metric weights and measurements are approximate. 'Sony' and 'BRAVIA' are registered trademarks or trademarks of Sony Corporation. All other trademarks are the property of their respective owners.

**SONY**